

Pioneer of Soft X-ray  
**SOFTEX**<sup>®</sup>

# **MICRO FOCUS**

## **X-RAY TV INSPECTION SYSTEM**

*Model*

**WORK-LEADER Series**

**SOFTEX**

*Has an ability to provide sharp and clear images of minute defects in the BGA, CSP, and Electric devices, voids and cracks in plastic packages.*

**SOFTEX original micro focus X-ray Generator is equipped!  
Realizes sharp and clear images!**

**FEATURES**

- Equips high resolution X-ray I.I. camera.
- Realizes high resolution.
- High-performance zoom system.
- Installs SOFTEX imaging and measurement software, ZET-1.
- High-performance table system to get sharp images.
- Perfect X-ray proof cabinet, leakage is less than 1 $\mu$  Sv/h.

|                   |             |                  |              |               |                |                |
|-------------------|-------------|------------------|--------------|---------------|----------------|----------------|
| Function of ZET-1 | Measurement | Image processing | Image saving | Table inching | Table teaching | Index function |
|-------------------|-------------|------------------|--------------|---------------|----------------|----------------|



**Standard type**

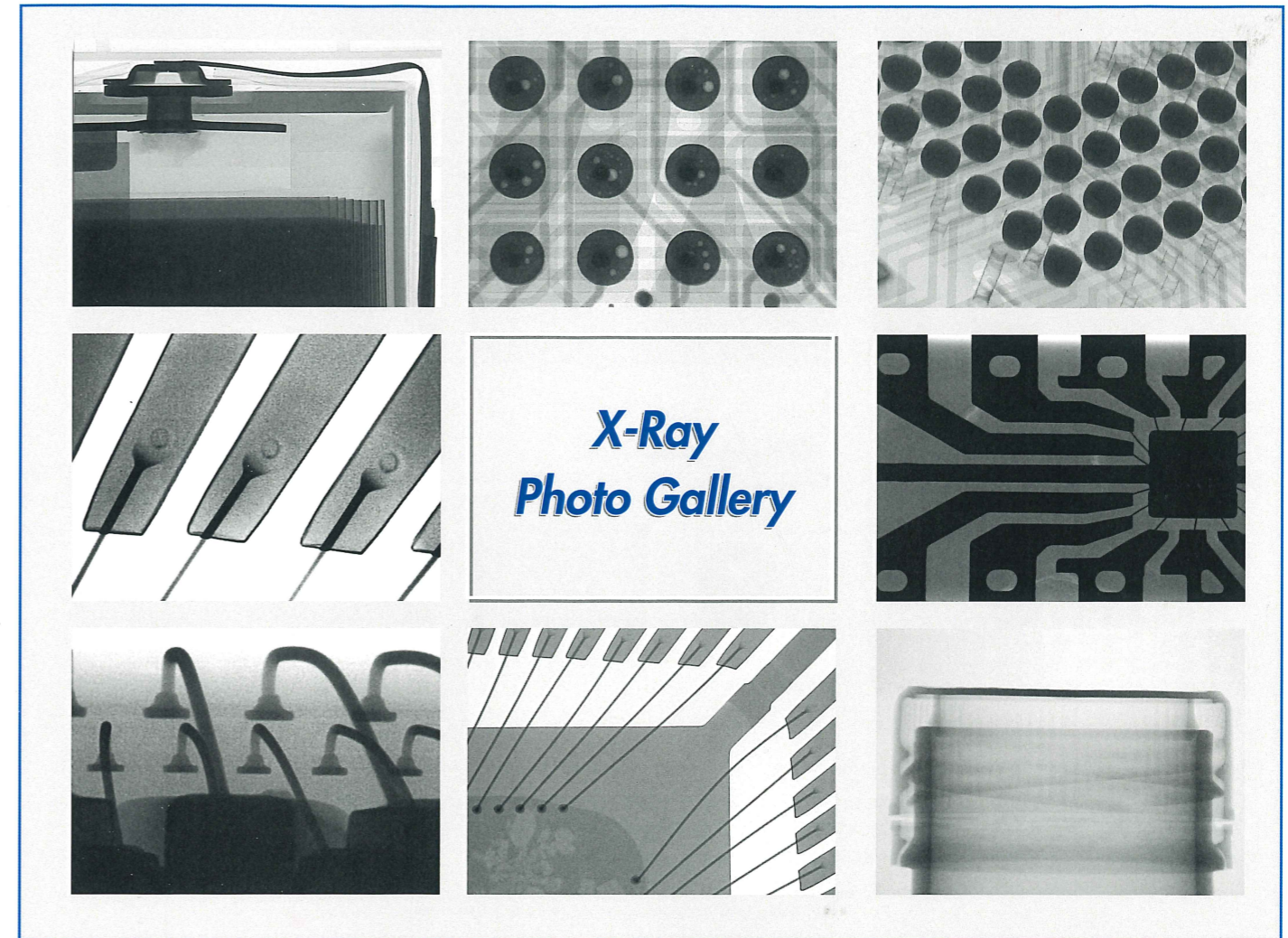
- SOFTEX original micro focus X-ray generator is equipped.
- Easy to control the table with joystick.
- Possible to enlarge the table size as a option.

**F type**

- A high-performance micro focus X-ray generator is equipped.
- A compact body.
- Possible to control with standing position.

**OPTIONS**

- Possible to observe samples from multi-angle with the table inclining system.
- Equips the camera driving system (up / down) to get wide field of view.
- Easy to get multi-angle images to use the sample manipulator or sample rolling system.



**SPECIFICATION**

| MODEL                            |               | WORK-LEADER 90                     | WORK-LEADER 100                        |
|----------------------------------|---------------|------------------------------------|----------------------------------------|
| Input                            |               | AC100-240V 50/60Hz ※note.1         |                                        |
| Max tube voltage                 |               | 90kV                               | 100kV                                  |
| Max tube current                 |               | 100 $\mu$ A                        |                                        |
| Power consumption                |               | approx. 1kVA                       |                                        |
| Total resolution                 |               | More than 33.3 L p/mm              |                                        |
| Focus size                       |               | 5 $\mu$ m                          |                                        |
| Table size                       |               | X250×Y330mm ※note.2                |                                        |
| Drive confine (X-Y table)        |               | X250×Y330×Z300mm ※note.2           |                                        |
| Drive confine (Camera up & down) |               | Option : 400mm ※note.3             |                                        |
| X-ray leakage                    |               | Less than 1 $\mu$ Sv/h             |                                        |
| Size                             | Standard type | Main unit : W 750×D1,100×H1,950mm  | Control cabinet : W700×D1,000×H1,400mm |
|                                  | F type        | Main unit : W1,130×D1,100×H1,950mm |                                        |
| Weight                           |               | Standard type : Approx. 950kg      | F type : Approx. 850kg                 |

note.1 : It could be three phase /200V by the specification.

note.2 : 400×400mm, 600×600mm can be available.

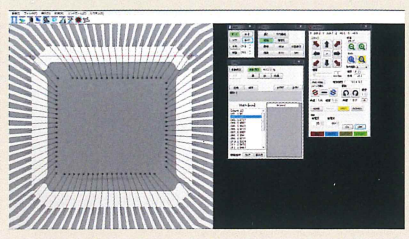
note.3 : Camera Up & Down 600mm is available, in such case Z table drive is 200mm.

※ Standard type and F type of 901・905.

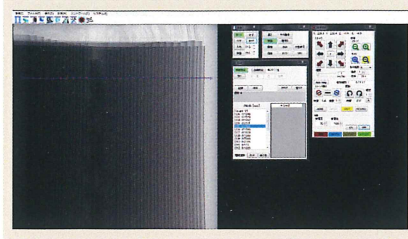
# SOFTEX image processing and auto-measurement system

This software is designed for measuring void percentage of semiconductor I.C, wire pitch, wire sweep and BGA solder ball area. Measuring result are converted automatically into actual dimensions an any ranges of magnification, and displayed on the monitor with statistics all of which can be filled.

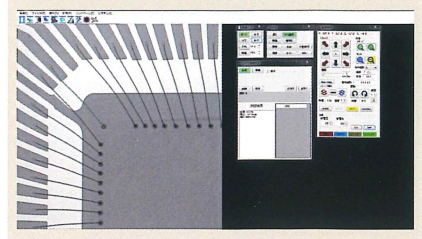
Wire pitch • interval measurement



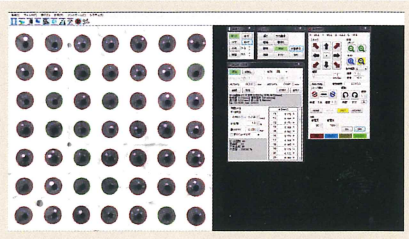
Interval measurement



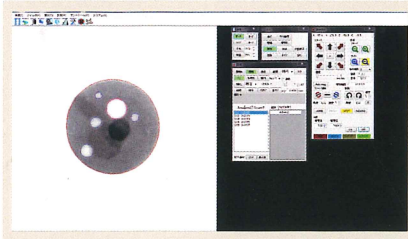
Wire sweep measurement



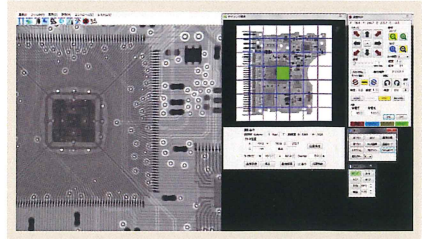
BGA solder ball measurement



BGA area measurement



Tiling(pasting function)



## CUSTOMER SUPPORT

You can consult anything with SOFTEX staff who specialized in the apparatus. We have also "System laboratory service", where we provide you trial and training.



※Published specifications and product appearance are subject to change without notice.

***We are flexible to make special designed machine. FOR EXSAMPLE...***

- Computerized X-ray control
- Computerized table control
- Fully automatic inline system
- Table tilting mechanism

## SOFTEX CO., LTD.

5-19-18 HIGASHI KASHIWAGAYA, EBINA-CITY,  
KANAGAWA PREF, 243-0401, JAPAN

TEL : 81-46-232-2571

FAX : 81-46-232-1179

E-mail : sales@softex-kk.co.jp

URL : <https://www.softex-kk.co.jp>

